

May 2014 Watercolor On-Line Newsletter

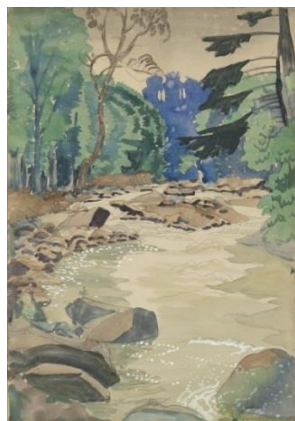
Exhibitions of Note

Burchfield Penney Art Center

Buffalo, NY

MELT

February 14–May 18, 2014



Charles E. Burchfield: Water

Burchfield Penney Art Center

Buffalo, NY

February 14–June 1, 2014

A look at the nexus of water as subject and as the unifying vehicle for the watercolor medium. It features artworks from the Burchfield Penney Art Center's collection and studies from the Charles E. Burchfield Foundation Archives, as well as a newly discovered work on loan.

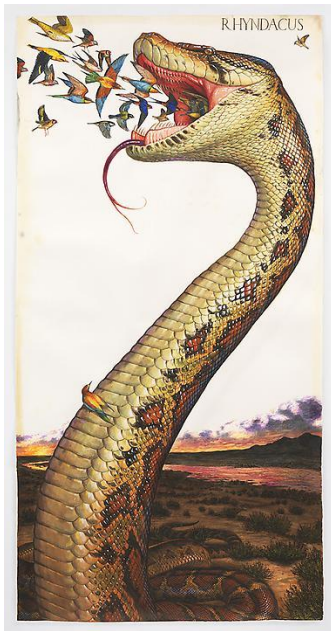
John Singer Sargent: The Watercolors

Mar 2, 2014 - May 26, 2014

The Museum of Fine Arts

Houston, TX

For further information: <http://www.mfah.org>



Walton Ford, *Rhyndacus*, 2014, watercolor, gouache and ink on paper, 119 1/4 x 60 1/4 inches, 302.9 x 153 cm

Walton Ford

Paul Kasmin Gallery

New York, NY

May 1 – June 21, 2014

Walton Ford explores the visual and narrative scope of traditional natural history painting with his monumental watercolors, chronicling encounters between human culture and the natural world. Several pieces in this exhibition will expand upon Ford's longstanding practice of incorporating written marginalia in his work, and feature for the first time musings penned by the artist from the perspective of his animal subjects.

As in his previous work, Ford draws upon his ongoing natural history research, mining literary sources, folklore and historical anecdotes for inspiration and imagery. The painting *Rhyndacus* (2014) is derived from an account in Aelian's *De Natura Animalium*. This ancient Roman miscellany of the natural world briefly mentions an impossibly large, sixty-foot

serpent inhabiting Phrygia (present day Turkey) that was said to magically lure prey into its open maw. Ford has vividly realized the imaginary snake in a strikingly detailed portrait towering nearly 10 feet tall. By depicting native Turkish flora and fauna, Ford conjures a monstrously majestic Ancient Roman vision of the East.

Walton Ford was born in Larchmont, New York in 1960, and currently lives and works in New York, NY. His work is included in numerous collections, including the Smithsonian American Art Museum and the Whitney Museum of American Art. A survey of Ford's work was organized by the Brooklyn Museum in New York in 2006 and traveled to the San Antonio Museum of Art in Texas and the Norton Museum of Art in Florida in 2007. Ford's midcareer retrospective traveled from the Hamburger Bahnhof Museum Fur Gegenwart in Berlin (January 23–May 24, 2010), to the Albertina in Vienna (June 8–October 3rd, 2010), and to the Louisiana Museum of Modern Art in Denmark (November 12, 2010–March 6, 2011). Taschen books has issued three editions of his large-format monograph, *Pancha Tantra*.

For further information: info@paulkasmingallery.com, 212.563.4474

Original Watercolors of Jill E. Poyerd, NWS

Exhibition features watercolor and oil paintings by artist Jill E. Poyerd.

Arts Club of Washington

Washington D.C.

May 2 - 31, 2014

44th National Exhibition Women Artists of the West

Women's Museum of California

San Diego, California

May 2 – 31, 2014

30TH National Exhibition

Illinois Watercolor Society

The Next Picture Show Fine Arts Center

Dixon, Illinois

May 6 – 30, 2014



The Niagara Frontier Watercolor Society Annual Spring Exhibition

Artists Group Gallery

Juried by John Salminen, demonstration on May 15, 2014

Buffalo, NY

May 7 - June 9, 2014, Reception: May 17

Aqueous 2014

West Virginia Watercolor Exhibition
Wheeling Artisan Center
Wheeling, WV
May, 8 – 29, 2014

2014 Spring exhibition

New Mexico Watercolor Society
Fine Arts Gallery
Albuquerque, NM
May, 10 – June 1, 2014

Paintings of the Potomac Valley Watercolorists

Exhibition features works by Washington D.C. metro area watercolor artists
Green Spring Gardens
Alexandria, VA
April 29-June 29, 2014

Exhibitions to Enter Artwork**46th WATERCOLOR WEST INTERNATIONAL JURIED EXHIBITION**

Deadline: June 30, 2014, on-Line entries
Transparent Watercolor
Juror: Judy Morris
Brea Art Gallery
Brea, CA
October 11 - December 14, 2014
For Further Information: www.watercolorwest.org

34th Annual International Exhibition

The San Diego Watercolor Society
San Diego Watercolor Society Gallery
San Diego, CA
Deadline: May 10, 2014

41st Annual Rocky Mountain National Watermedia Exhibition

Foothills Art Center
Entry Deadline: May, 26th 2014
Golden, CO
<http://tinyurl.com/n227aq6>

Museums and Organizations



Nordic Watercolour Museum

Sweden

<http://akvarellmuseet.org/en>

Demonstrations, workshops, and Lectures

Venue: Tuscan Renaissance Center

Touring in Tuscan, Italy with Mary Whyte

May 10 - 17, 2014

Further information: Tracy Culberston at Art in the Mountains: 503-930-4572



Niagara Frontier Watercolor Society

Demonstration by John Salminen

Burchfield Penney Art Center

Buffalo, New York

May 15, 2014

John has won over 200 major awards in national and international exhibitions including the AWS Gold Medal twice, the Allied Artist Silver and Gold Medals, the NWS Silver Star Award twice, the TWSA First Place Award three times and the Shanghai International Biennial Award. He has been an invited artist in 14 exhibitions in Asia and Australia. He is a frequent juror/judge of national and international exhibitions. His work is featured in many national and international books and magazines. John is a signature member of several art societies, including AWS, Allied Artists, TWSA and NWS. He is a member of the Jiangsu Watercolour Research Institute in China and is the first American member of the Australian Watercolour Institute. For further information www.nfws.org.

Utah Watercolor Society Spring Workshop

John Salminen

Salt Lake City, Utah

May 5–9, 2014

Further information: Mendonartist@yahoo.com



Woman: The Dark Continent, 2003, Gouache on paper, 16x20 inches

Creating Color and Light-Opaque and Transparent Pigment in Watercolor

Lunch Lecture with Jed Jackson and Valia Oliver

Burchfield Penney Art Center

Buffalo, NY

May 23, 2014

Pennsylvania Watercolor Society

Spring Workshop with Karlyn Holman

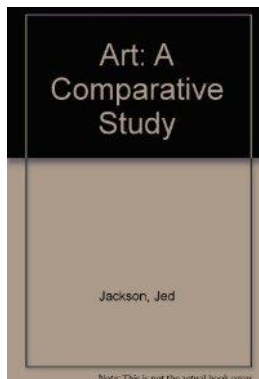
Hummelstown Fire Department

Hummelstown, PA

June 16 -20, 2014

For further information: pwswrkshops@gmail.com

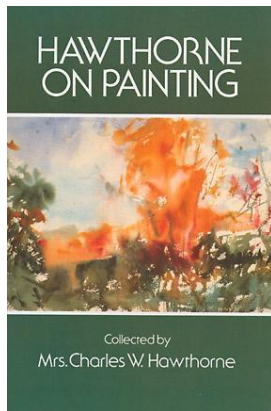
Books, Catalogues and Publications



Art: A Comparative Study

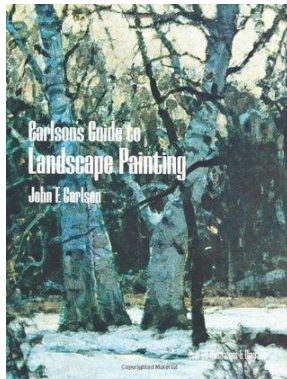
Jed Jackson

Kendall Hunt Pub Co, 1994



Hawthorne on Painting

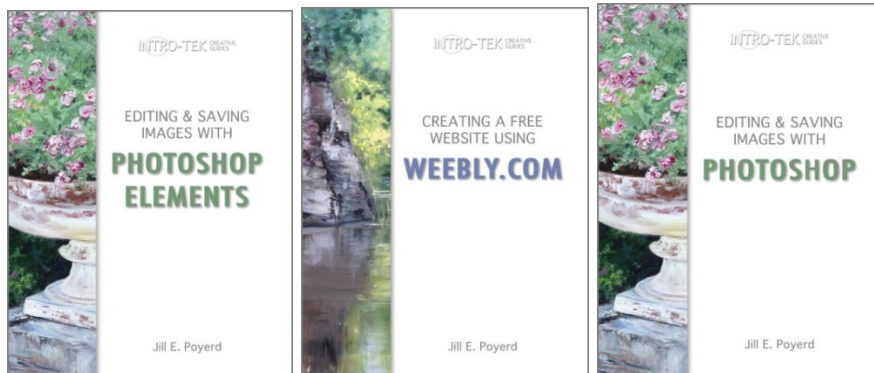
Hawthorne was an American painter who founded the Cape Cod School of Art. This work, collected from notes taken by his actual students, offers hundreds of direct lessons, ideas, suggestions, and more. Recommended by Thomas A. Daly.

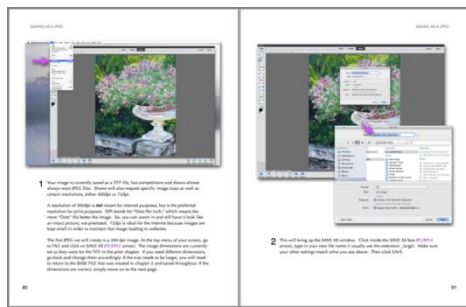


Carlson's Guide to Landscape Painting

John Carlson

The whys and how's of the various aspects of landscape painting: angles and consequent values, aerial and linear perspective, painting of trees, emotional properties of line and mass in composition, light, unity of tone, plus information on canvas, palette, brushes, more. 34 black-and-white reproductions of paintings by Carlson. 58 explanatory diagrams. Recommended by Thomas A. Daly.





Creative Guide Series:

Editing & Saving Images with Photoshop

Editing & Saving Images with Photoshop Elements

Creating a FREE Website Using Weebly.com

By Jill E. Poyerd, NWS

Publisher: CreateSpace Independent Publishing Platform

INTRO-TEK Creative Guides are technical workbooks tailored specifically for visual artists in order to help them understand computer-related tasks such as editing their digital photos, creating a website, and more.

Available on Amazon and Apple's iBookstore: www.INTRO-TEK.com

Each workbook features: guiding arrows, large screen shots, step-by-step numbering, minimal concepts per page

In the News



Vasily Kandinsky. "Farbstudie — Quadrate mit konzentrischen Ringen" (Color study—squares with concentric rings) (1913), watercolor, gouache, and crayon on paper, 9 3/8 × 12 3/8 inches

The watercolor, *Farbstudie*, was exhibited in the *Inventing Abstraction, 1910-1925* at the Museum of Modern Art in 2013.



Mission Gold “Denise Sperry Watercolor Landscape Set” from the Martin F. Weber. Co.

Mission Gold Watercolor Paints are incomparable for their brilliance and intensity. I designed “**The Denise Sperry Landscape Set**”, a 9 color kit based on color theory. My goal was to create the maximum amount of color mixtures with the fewest number of paints. The set contains a warm and cool of each primary color, plus burnt sienna and ultramarine blue to make a variety of grayed earth tones which are invaluable in landscape painting. Also included are three staining colors that make rich vibrant jewel tones, and when combined, create a dynamic black. One green is included which mixes with every color in the set to create an infinite number of luminous green hues found in nature.

This set is versatile as it is not limited to any one subject or genre. The compact size is perfect for travel, plein air painting, and art workshops. The paints are professional quality, last longer, and their affordable price makes this set perfect for both student and the professional artist. — Denise Sperry

On-line Newsletter Editor

Kathy Gaye Shiroki, Curator of Museum Learning and Community Engagement
Monet Kifner, Intern at the Burchfield Penney Art Center at Buffalo State College