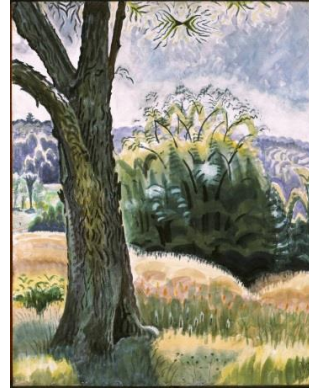


# International Center for Watercolor Artist Inspiration Series Spring 2017 Burchfield Penney Art Center



**Winter Snow**

Artist/Instructor: Marty Kutas  
Sunday, January 29, 1:30-4:00 p.m.  
\$30 member/\$40 not-yet member  
\*Beginner workshop



**Inspired By Charles E. Burchfield**

Artist/Instructor: Jennifer Koury  
Sunday, February 12, 1:30-4:00 p.m.  
\$30 member/\$40 not-yet member  
\*Beginner workshop



**Watercolor Hearts, A Family Workshop**

Saturday, February 11, 10:30-12:00 noon  
Artist/Instructor: Minna Kempf  
Only kids pay \$15 member/\$20 not-yet member  
\*Recommended for children 6-13 years old  
and

**Watercolor Toes and Red Hearts:  
A Family Workshop**

Saturday, February 11, 1:00-2:00 p.m.  
Artist/Instructor: Kathy Shiroki  
Only kids pay \$10 member/\$15 not-yet member  
\*Recommended for children 3-5 years old



**Four Seasons-Four Paintings:**

**Watercolor Plein Air at Forest Lawn**

Artist/Instructor: Jennifer Koury  
Winter: Saturday, February 18, 10AM - 2:00 PM.  
Spring: Saturday, May 6  
Summer: Sunday, August 6  
Fall: Saturday, October 14  
\$48 BPAC member/\$58 BPAC not-yet member  
All 4 seasons: \$160 BPAC member/\$200 BPAC  
not-yet member

# International Center for Watercolor Artist Inspiration Series Spring 2017 Burchfield Penney Art Center



## Painting a Chickadee in Watercolour

Artist/Instructor: Kateri Ewing  
Sunday, February 19, 1:30 - 4:30 p.m.  
\$36 members/\$46 not-yet members



## Bread and Water

Saturday, April 8, 3:30-6:00 p.m.  
\$35 members | \$45 not-yet members  
Held at BreadHive



## Sketch Lines | Watercolor Shapes: Darwin Martin House

Sunday, March 5, 2:00-5:00 PM  
\$36 BPAC member/\$46 BPAC not-yet member  
Held at the Darwin Martin House



## A Farm, a Barn, Spearmint, and The Golden Hour: A Therapeutic Landscape Richardson Olmsted Complex Tour followed by Plein Air Painting

Sunday, May 7, 1:30-4:30 p.m.  
\$36 members | \$46 not-yet members  
Held at the Richardson Olmsted Complex



## Touchstones

Artist/Instructor: Wendy Caldwell Maloney  
Sunday, March 12, 1:30-4:00 p.m.  
\$30 member/\$40 not-yet member

International Center for Watercolor  
[www.BurchfieldPenney.org/Watercolor](http://www.BurchfieldPenney.org/Watercolor)

Contact Kathy G. Shiroki  
716.878.3549/[shirokkg@buffalostate.edu](mailto:shirokkg@buffalostate.edu)